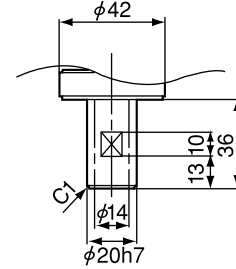
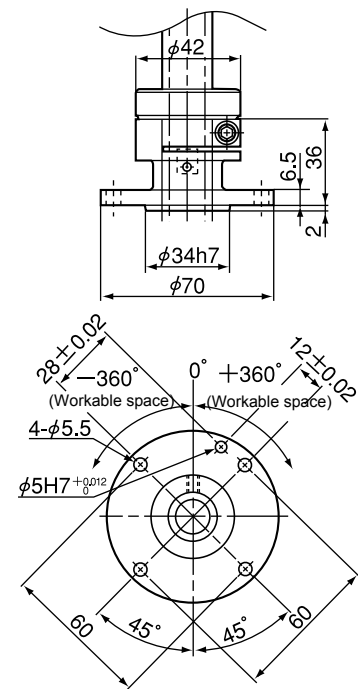


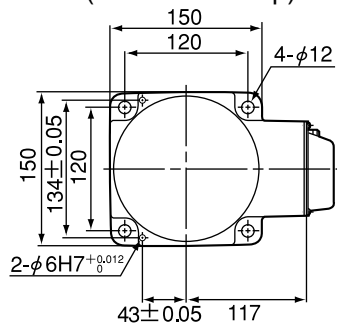
Detailed drawing of hand mounting face (Viewed from D)



Flange (Option) mounting face



Base mounting dimensions (Viewed from top)



| Model | S | L1 | L2 |
|--------------|-----|-----|-----|
| HSS-45451G-W | 150 | 64 | 621 |
| HSS-45452G-W | 200 | 114 | 671 |
| HSS-45453G-W | 320 | 234 | 791 |

Note: In case of the overhead-mount, the Z axis in the uppermost position may reach higher than the base mounting face. Be careful with the interference with surrounding facilities.