

PoE-capable Control Unit

IPPA-7M4-C2 / IPPA-7M2-C2

Intelligent lighting achieved through pulse overdrive control with Power over Ethernet (PoE).

Electric power can be supplied via LAN cable from the PoE hub.

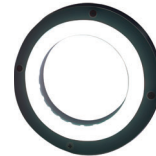
Supports ORiN provider.



Scan here
for product
information
details



Multi-position
ring light
IMAR series



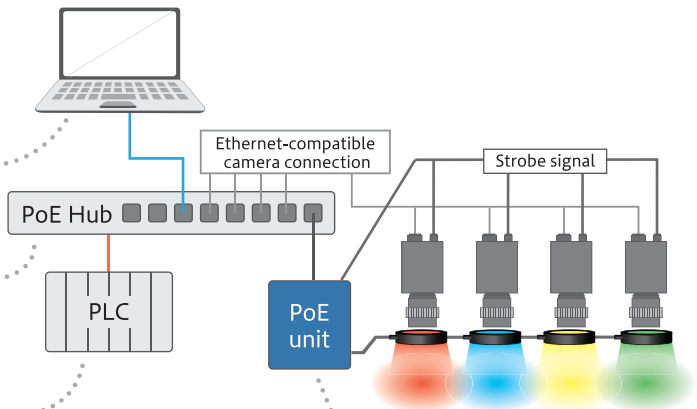
NEO ring light
(high intensity, highly
homogeneous type)
IHRA series

Features

- Output controllable from a PC
The ideal output conditions can easily be set while looking at the video images for image processing.

- Powered by PoE
Uses PoE power supply. Reduces wiring by sharing the same cable for communication and power supply. Through the Ethernet, the vision system can be installed at a location away from the control panel.

- Freely controllable through Ethernet
Lighting can be controlled from any device on the Ethernet. Does not require RS-232C or I/O for lighting control. Can be controlled from any device, such as a PLC or a display equipped with a PC and Ethernet, making it possible to freely design the installation.



- Compact housing
Provided in a compact housing.
Can be installed anywhere.

Leimac Ltd.

Website

<https://leimac.jp/en/>

Contact us

<https://leimac.jp/en/mail/>

